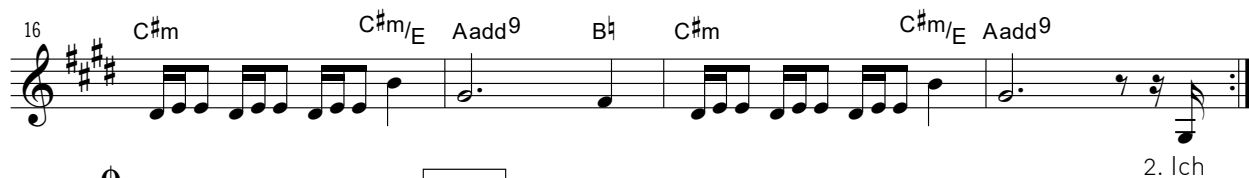
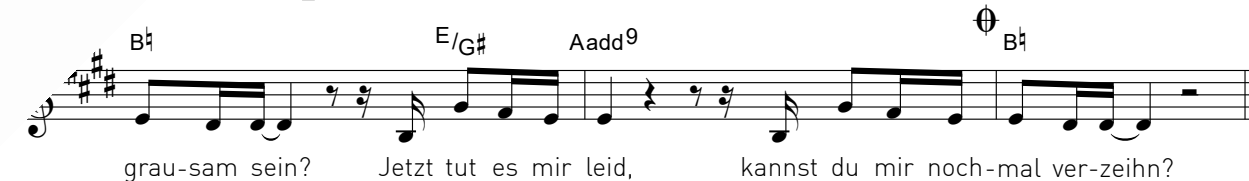
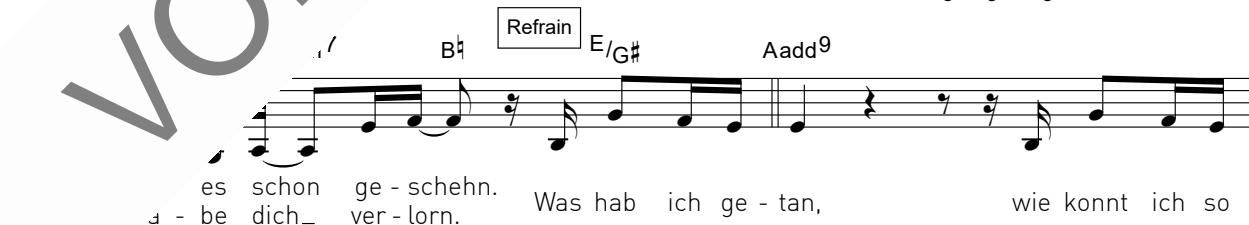
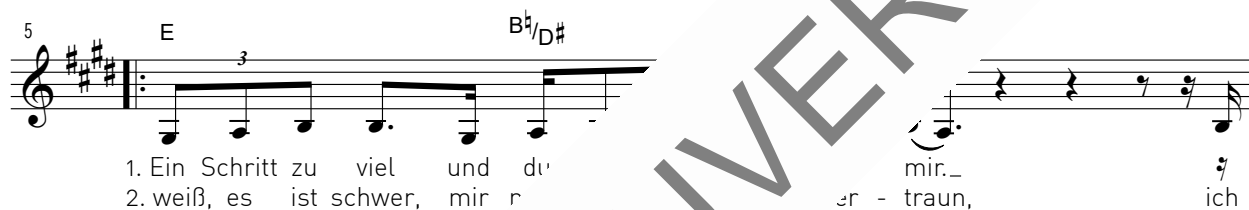
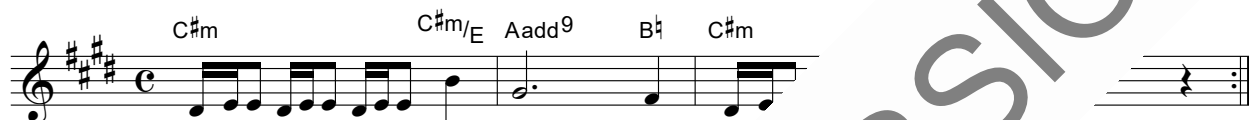


Was hab ich getan

Text*



22 B \sharp E/G \sharp Aadd9 B \sharp

grau-sam sein? Jetzt tut es mir leid, kannst du mir

25 C \sharp m C \sharp m/E A \flat

27 C \sharp m C \sharp m/E Aadd9 E/G \sharp bis Fine

Was hab ich ge -